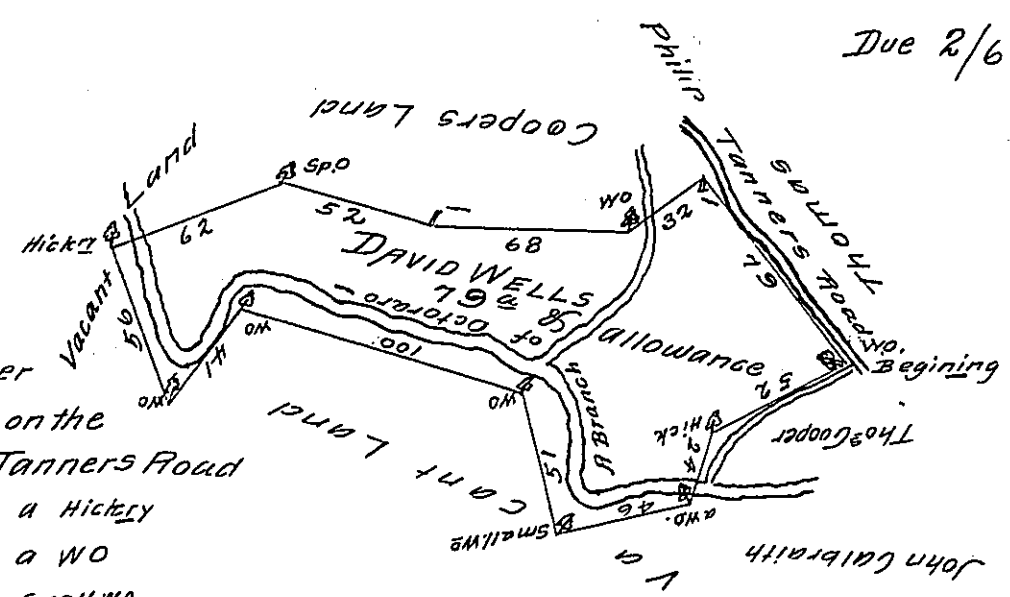


Due 2/6 pd



BEGINNING at a Corner  
 White Oak standing on the  
 West side of Philip Tanners Road

- Thence S. 62 W 52 a Hickory  
 S 25° W 24 a WO  
 S 75° W 46 Small WO  
 N 15° W 51 a WO  
 N 75° W 100 a WO  
 S 36° W 41 a WO  
 N 19° W 56 a hickory  
 N 71° E 62 a Spun. O  
 S 75° E <sup>BY THE COOPER'S</sup> 52 a Post  
 & East 68 a W.O.  
 & N 54° E 32 a Post  
 & S 30° E 79 to ye

Place of beginning Containing  
 79<sup>ac</sup> & the usual allowance (for  
 Roads &c) of 6<sup>ac</sup> pCL

The above described is a Tract of Land scituate in London Dery  
 Township Chester County. Which (by vertue of a Warrant from  
 ye Prop<sup>rs</sup> dated November ye 4<sup>th</sup> A.D. 1747) was Survey'd to Da-  
 vid Wells the 21<sup>st</sup> of ye fifth month 1747/8

John Churchman

IN TESTIMONY that the above is a copy of the original remaining on file in  
 the Department of Internal Affairs of Pennsylvania, made  
 conformably to an Act of Assembly approved the 16th day of  
 February 1833, I have hereunto set my hand and caused  
 the Seal of said Department to be affixed at Harrisburg,  
 this twenty-third day of April 1907

*Laack Brown*  
 Secretary of Internal Affairs.

Lancaster Saml Scott 218